

# TNmanager

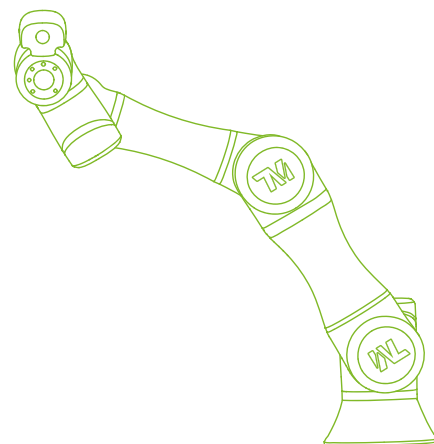


DISTRIBUIDOR AUTORIZADO EN MÉXICO  
Av. Arco Vial No.199, calle 3 interior I, Parque Industrial  
FlexPark Apodaca, Apodaca, N.L. C.P. 66603.

Sin costo: 800 841 7199  
Contáctanos: 81 1766 9959

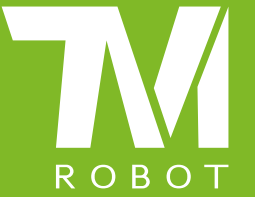


[techman-robot.com.mx](http://techman-robot.com.mx)  
IASAUTOMATION.COM.MX



# TNmanager

Your smart factory partner  
Software Center Solution



## Information & Intelligent Center

- Data and Status Exchange between TM Robots / Devices
- Predictive Maintenance of TM Robot
- Connection with MES and ERP Databases

## Visualization Center

- Flexible Data Visualization
- Easy Multi-Dashboard Deployment and Display

## Planning Center

- SFC Integrated, Process & Client Planning
- Integration of Alarm and Action System

Industry 4.0

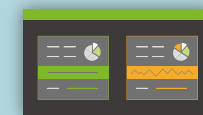
### Enterprise Management



### IT System



MES/ERP



War Room Dashboard

### Plant Management & Edge Computing & SCADA



MSFT SQL



Primary



Redundant



Backup



Data Server



Ethernet



TMmanager Dashboard

### Stations / Process Plan & Control



Gateway



OPC UA Server

### TMmanager SFC



TMmanager Thin Client



Plant Management Dashboard

- Productivity Information
- Energy Management Solution

CC-Link I/ETSN Modbus CANopen DeviceNet EtherNet/IP

### TM Robot Monitor & Project Deployment

TCP/IP Modbus



## Introduction

**TMmanager** is a powerful SCADA software solution that makes it easy for you to utilize all manufacturing data and manage your smart factory. It has an intelligent management system with real-time data collection, monitoring and analysis. It runs on Windows operating system and supports multiple standard industry protocols and databases. Our user friendly interface allows you to remotely monitor and view all factory information instantly. The software dashboard is also designed to provide operators and managers with visualized data, generate charts, and analyze report. More importantly, it can also provide alarm messages to relevant personnel for them to understand the real-time conditions and make the right response.

TMmanager also integrates Techman Robot Management System (RMS) that uses a Dashboard Wizard to automatically detect TM Robots connected to the local network. There are three types of dashboard of this function:

1. Robot Status Monitor (RSM) Dashboard monitors the TM Robot operation status and related parameters.
2. Robot Project Deployment (RPD) Dashboard helps to manage and deploy TM Robot projects based on process or work order.
3. Robot Productivity Performance (RPP) Dashboard displays the TM Robot production performance and utilization.

Techman Robot sees TMmanager as a comprehensive intelligent manufacturing solution. Not only does it help customers optimize production process, reduce costs and time, improve production efficiency, it also helps managers to understand the situation and make the right decision immediately. By linking data analysis and task execution, you can work to create new business models in the era of Industry 4.0. At Techman Robot, we are closing the gap of digital transformation, and TMmanager is Your Smart Factory Partner.

### Added Values for Smart Manufacturing

Shop Floor Control (SFC) module provides simple and flexible dashboards for manufacturing processes, workstations, SFC Client and production data. It can be used in different industries to achieve an ever-changing production line. This can greatly optimize IT and IE engineering resource and investment, while reducing the implementation time of SFC system.

## Product features



### Easy to use

- Support multiple smart module and wizard
- Customized KanBan and dashboard
- Support pie chart, bar graph and line chart
- Energy management solution
- Support multi-language
- Support logic and math operations



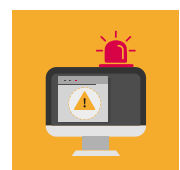
### Data Security

- Redundant System
- Data Center: monitor and access different database
- SQL Import/Export/Backup
- Remote Control and Monitoring System



### Open data interface

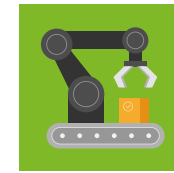
- Support SQL database(MySQL / Oracle / MS SQL)
- Support Socket and Modbus
- Support Web API / RESTful API
- Dashboard deployment with container



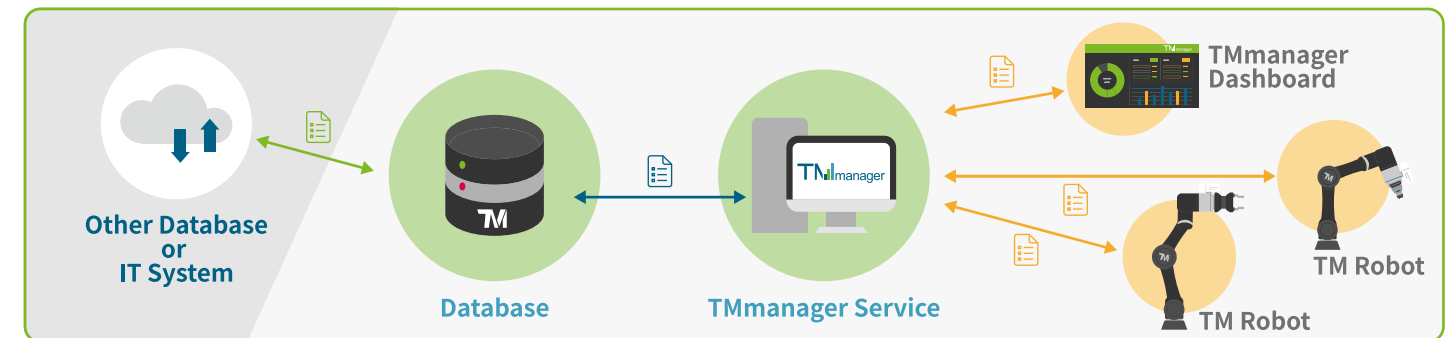
### Alarm system

- Threshold setting and alarm event management
- Trouble Shooting

### Robot Management System



- Automatically detection for connected TM Robot in the same area network
- TM Robot status monitor wizard
- TM Robot project deployment and management
- TM Robot information and parameters module
- TMflow™ Error / Alarm message
- TM Robot Log management



### Shop Floor Control System

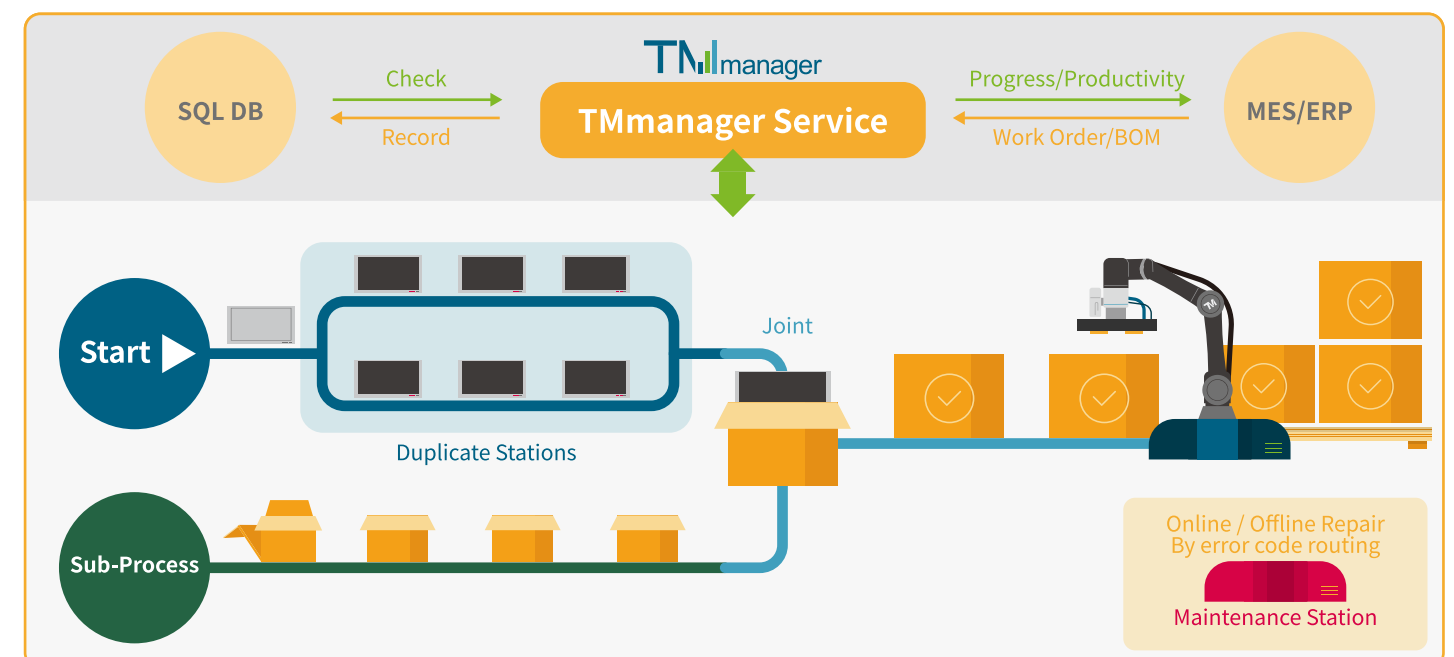


#### Introduction:

TMmanager provides Shop Floor Control (SFC) module for collecting, monitoring, controlling, and managing all manufacturing data. With a user-friendly interface, users have the flexibility to plan processes, workstations, and operations for products in different areas and easily get their progress status. With integrated charts and reporting dashboards, operators and managers can understand real-time situation and make the right decisions. By continuously improving your company's capabilities, you will succeed in the Smart Factory era.

#### Product features:

- Manufacturing Data and Historical Data Management
- Plan Process / Station / Operation / Action / SFC Client
- Support Duplicate Stations and Joint Process
- Routing Check Control
- Work Order Management with Progress / Productivity Status
- Custom Kanban and Report
- Alarm / Message / Action System
- S/N Generator with Multiple Coding Principles



**IAS**  
AUTOMATION®

**AÑOS**  
— 2010 - 2020 —

DISTRIBUIDOR AUTORIZADO EN MÉXICO

**TM** TECHMAN ROBOT

Teléfonos: 800 841 7199 y 81 1766 9959

**[www.techman-robot.com.mx](http://www.techman-robot.com.mx)**

[f](#) [v](#) [in](#) [t](#) [IASAUTOMATION.COM.MX](http://IASAUTOMATION.COM.MX)

Av. Arco Vial No.199, interior I, Parque Industrial FlexPark Apodaca,  
Apodaca, Nuevo León, México, C.P. 66603  
**[contacto@cobot.mx](mailto:contacto@cobot.mx)**

